

SightSensor HD

Hybrid Thermal-Visible Smart Camera

sightlogix
making outdoor video...*smarter*



Day/Night Thermal Detection and HD Verification

The SightSensor HD is an affordable smart camera that uses SightLogix' acclaimed video analytics to detect intruders with high accuracy and low nuisance alerts over outdoor areas. With a thermal imager for detection, high-definition color imager for detail, built-in LED illumination and integrated analytics, the hybrid SightSensor HD combines outstanding thermal intrusion detection with color surveillance into a single, low-cost solution.

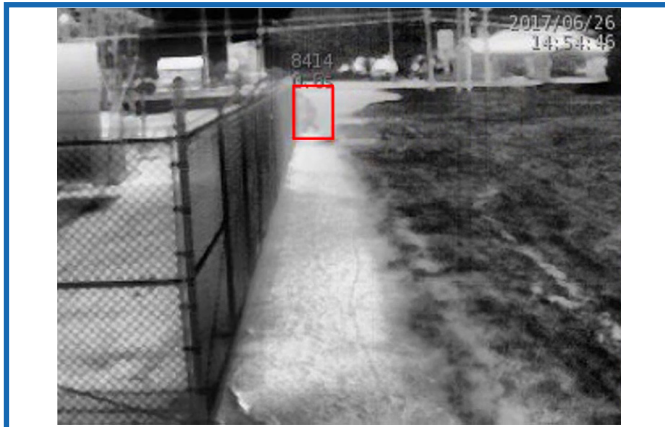
FEATURES

- ✔ Thermal detection with built-in Video Analytics
- ✔ High Definition WDR color video
- ✔ Outstanding low-light image quality & IR illumination

BENEFITS

- ✔ Accurate intruder detection day and night, all conditions
- ✔ Real-time alarm assessment
- ✔ Nighttime surveillance without additional lighting

THERMAL DETECTION



Thermal detection red box also displayed on color video

HD COLOR DETAIL



White border indicates thermal detection zone

ACCESSORIES

Mounts

Wall and pole mounts available. Refer to the *SightLogix Accessories* datasheet

SightMonitor

GPS-based target display and coordination software. Refer to the *SightLogix SightMonitor Datasheet*

SightTracker

Automatic PTZ controller. Refer to the *SightLogix SightTracker Datasheet*.

ORDERING INFORMATION

Part Number	Day/Night Detection Range of a Person	Detection FOV	Visible FOV
HD236	42m (138ft)	36°	51°
HD220	80m (262 ft)	20°	27°
HD332	75m (246ft)	32°	40°

PN 6-2000015-001
Made in the USA

Specifications

✓ Thermal Imager

Thermal Detector

Un-cooled VOx Microbolometer 8-14 micron

Dynamic Range

14 bit digital sensor interface

Aspect Ratio: 4:3

Sensitivity (NETD): <60mK at f/1.0

Frame Rate: Up to 15 FPS

Video Output: H.264, MJPEG

✓ HD Color Imager

Imager: 2 MP (1/2.8-inch, Progressive Scan CMOS)

Aspect Ratio: 16:9 (Full HD 1080p, 1920 x 1080)

Dynamic Range: WDR >120db Multiple exposure

Imaging Area: Diagonal 6.46 mm (Type 1 / 2.8)

Minimum Illumination: 0.01 Lux @ F1.2

Frame Rate: Up to 15 FPS **Lens:** f1.6, fixed focus

NIR Illumination: Dual 850nm LEDs

Day/Night: Controllable IR cut filter

Video Output: H.264, MJPEG

✓ Video Analytics

Video Analytic Rules

Motion Tracking, From/To Zones, Target Size Filtering, Wrong-Way Direction, Loitering, Object Left Behind, Speed, Time of Day, Mask Zones

Communications

Metadata via industry standard XML over a HTTP/HTTPS interface for 3rd-party integration

SightTracker (optional)

Automatically positions supported PTZ cameras for continual tracking

✓ Network

Ethernet Wired

100 RJ45, IEEE 802.3, 802.3i, 802.3u

Data Rate: 64 kbps to 8 Mbps

Operating Mode

100 Mbps - Full-duplex, Half-duplex

Protocols

DHCP, IPv4, HTTP, HTTPS, SSL, SLP, DNS, NTP, RTSP, RTP, TCP, UDP, IGMP, RTCP, ICMP, ARP

Configuration

SightMonitor or Web browser (using default IP address)

✓ Electrical

Voltage: 24 VAC/DC +/- 10% or PoE IEEE 802.11af

Total max power (with all functionality):

34W (1.5 amps) @ 24VAC/DC

- **Basic camera operation:** 8W

- **NIR Illumination:** 6W (requires 24V)

- **Window Heater (severe conditions):** 20W (requires 24V)

I/O Connectors

RJ45 (Ethernet), terminal blocks for RS422/RS232, power, audio out, relay out

Audio Out: Balanced line output for external speaker to broadcast default message on alarm

✓ Camera Enclosure

Weight: 2.1 kg (4.6 lbs.)

Enclosure: IP66

Dimensions

30.7 cm L x 14.7 cm W x 14.0 cm

Mounting

3 x 1/4-20 UNC bolts

✓ Environmental

Operating Temperature

-30° to +50°C (-22° to +122°F)

Relative Humidity

0 to 100%

Storage Temperature

-40° to +80°C (-40° to 176°F)

Safety Compliance

FCC Part 15, Class A, CE

