



# GENERAL CATALOGUE



[www.DORLET.com](http://www.DORLET.com)

# DORLET

*'We have been leading the market for  
30 years, by developing ad-hoc  
security solutions for our clients.'*

DORLET facilities at Miñano, Vitoria-Gasteiz

## Software

DASSnet® integrates propriety products by DORLET® with third-party security solutions to achieve a single integrated management and security environment.

## Hardware

We design and manufacture access control solutions, controllers, readers... Bringing technological value to all installation systems.

## Support

We advise and support our clients by providing them with the engineering, consultancy, and implementation aspect of the solutions we develop.

# INDEX

About us	<b>04</b>
Controllers	<b>08</b>
Readers	<b>13</b>
Wireless systems	<b>19</b>
Software	<b>23</b>
Integrations	<b>33</b>
Accessories	<b>42</b>





## ABOUT US

### 30 YEARS OF COMMITMENT TO OUR CLIENTS

DORLET®'s company headquarters are in Vitoria Gasteiz, where we have been active for more than three decades, specialising in access control solutions with the Integral Security Software platform, DASSnet®.

We are aware that we still have a long way to go, but we can be proud of having far exceeded our initial objectives thanks to the great team of people that DORLET® has had since the entrepreneurial and consolidation phases of the company.

We like challenges and that is why we embark on ambitious projects in market niches that we understand as priorities and where we provide more value: Critical Infrastructures.

## WHAT WE DO

### WE RESEARCH, MANUFACTURE AND DEVELOP

Thanks to our policy of developing ad-hoc projects, we can provide solutions tailored to the client, with a high level of integration with third-party security systems.

At DORLET® we adapt to the constant changes entailed in Security Systems, by researching, manufacturing and developing our own hardware and software oriented to access control, within the world of electronic security.

We control the access of people and vehicles providing solutions to all types of environments, using the latest technologies to create simple and safe systems.



## HOW WE DO IT

### INNOVATION AND DEVELOPMENT

At DORLET®, almost 50% of our staff work in the R&D department to be able to offer our clients top quality products in line with the latest technology advances.

DORLET's policy is to produce all its systems at our facilities or with national suppliers. For this reason, our headquarters are located within the Álava Technology Park (Basque Country, Spain).

Approximately 75% of the employees work at the central offices in Vitoria-Gasteiz, and the remaining 25% work at the different delegations distributed nationally and around the world (France, Dubai, Mexico).

## WHERE WE ARE HEADING TO

### ACCESS AND INTEGRATION CONTROLS

At DORLET® we develop our activity focusing our efforts on critical infrastructures, facilities that require systems that add a differential value.

At these critical infrastructures, access control and electronic security system integrations are key to operation and decision-making.

We work on Cloud Systems and on credentials in mobile devices, as well as on usability. We also focus on integrating different communication platforms to perform remote installation management, startup, maintenance and updates.





DORLET® has focused its developments on **access control systems**, and has evolved over the years to also use them to manage:

- Time control
- Management of alarms and technical signals
- Security systems integration (CCTV, fire, intrusion...)
- Integration with other platforms (SAP, SCADA, BAM...)
- Graphic map view
- IP-SIP intercom and video
- Patrol control
- Visits Management
- WEB management interfaces
- APPs for mobile devices

All the different elements that constitute the DASSnet® platform make us a leader in Access Control and **Security Systems Integration**.

# Comprehensive Security Solution

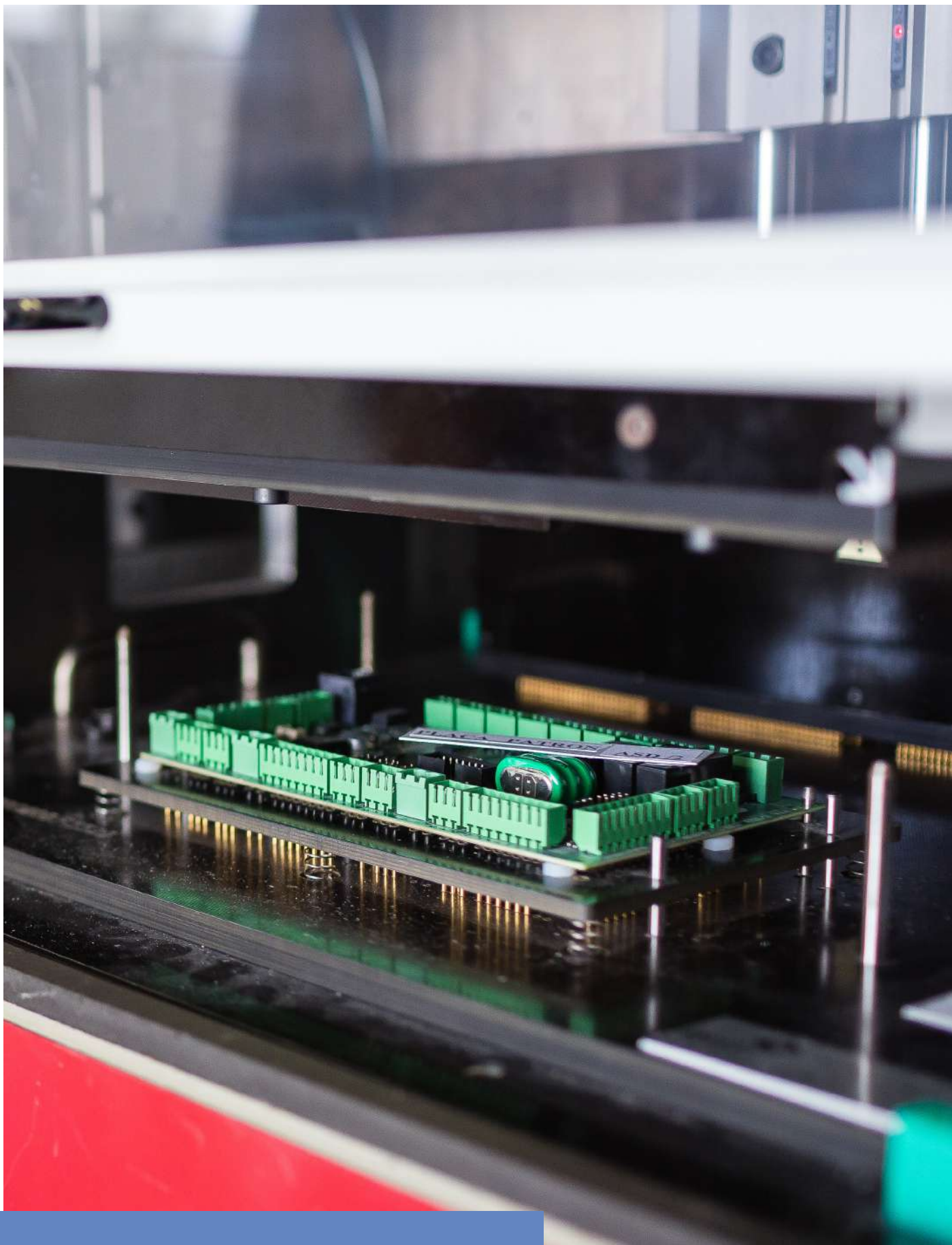
Our integrated security system (DASSnet®) is the reason why DORLET® is the **perfect solution** for the design and implementation of an **advanced security system**, regardless of the installation size.



New ministerial regulations and acts on **Security Systems** require compliance with certain standards for these systems.

Their **Grade 4 Access** and **Grade 3 Intrusion** certifications guarantee that the most demanding clients' requirements will be met, such as those relating to **Critical Infrastructures**.





## CONTROLLERS

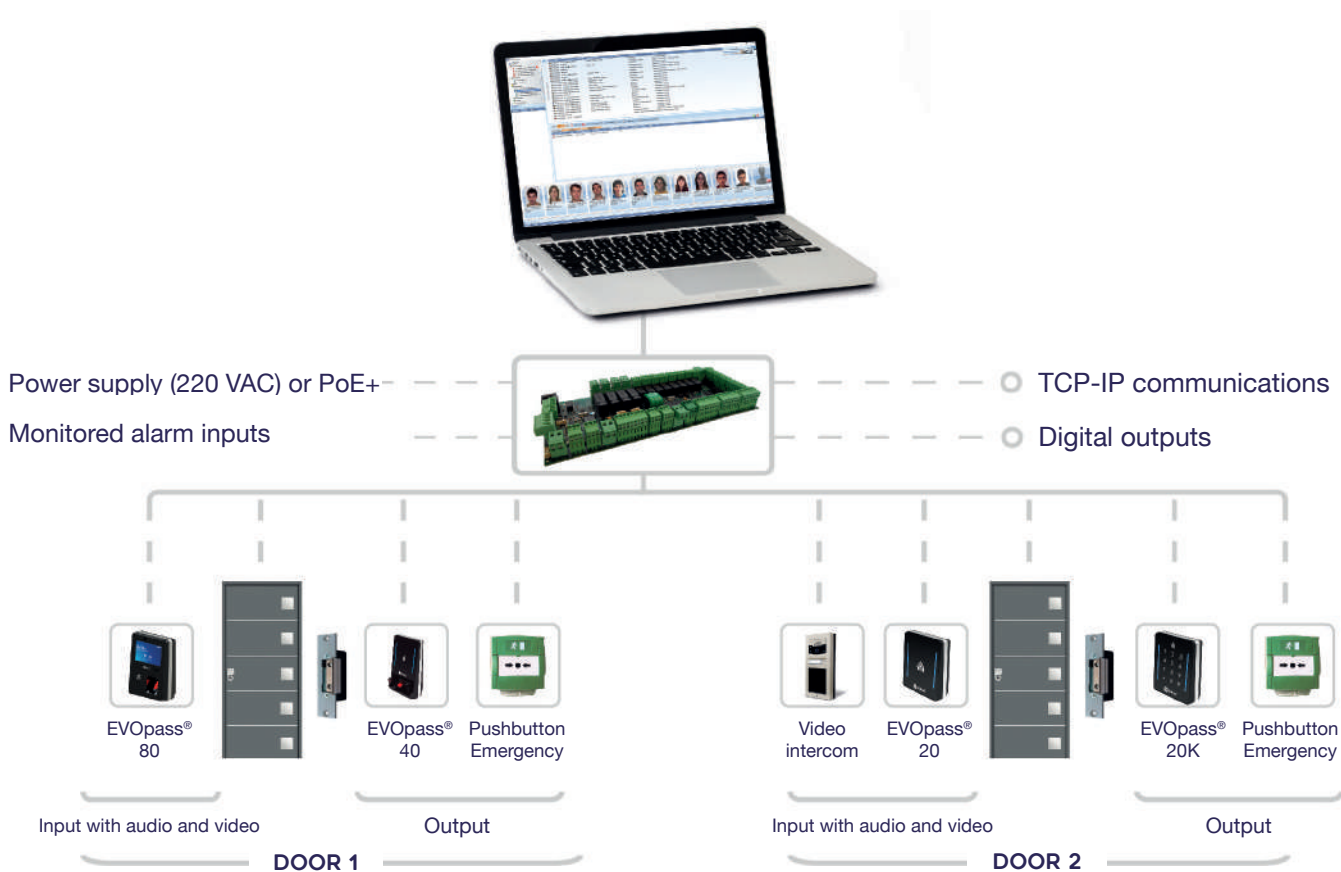


# Access Control and Signal Integration Units (Controllers)

DORLET® designs and manufactures its own controllers, responsible for **managing all access control signals** (readers, push buttons, locks...) and technical alarms (inputs, outputs...)

Thanks to its high storage capacity for users and messages, it can operate at full performance without needing to be continuously connected to the DASSnet® server.

By also adding its encrypted TCP-IP communications with AES encryption, it becomes a **fully fault-safe and sabotage-proof system**.



## POE+

Controllers and all devices connected to them (locks, sensors, readers...) can be powered with PoE+ (25.5W).

## DATA ENCRYPTION

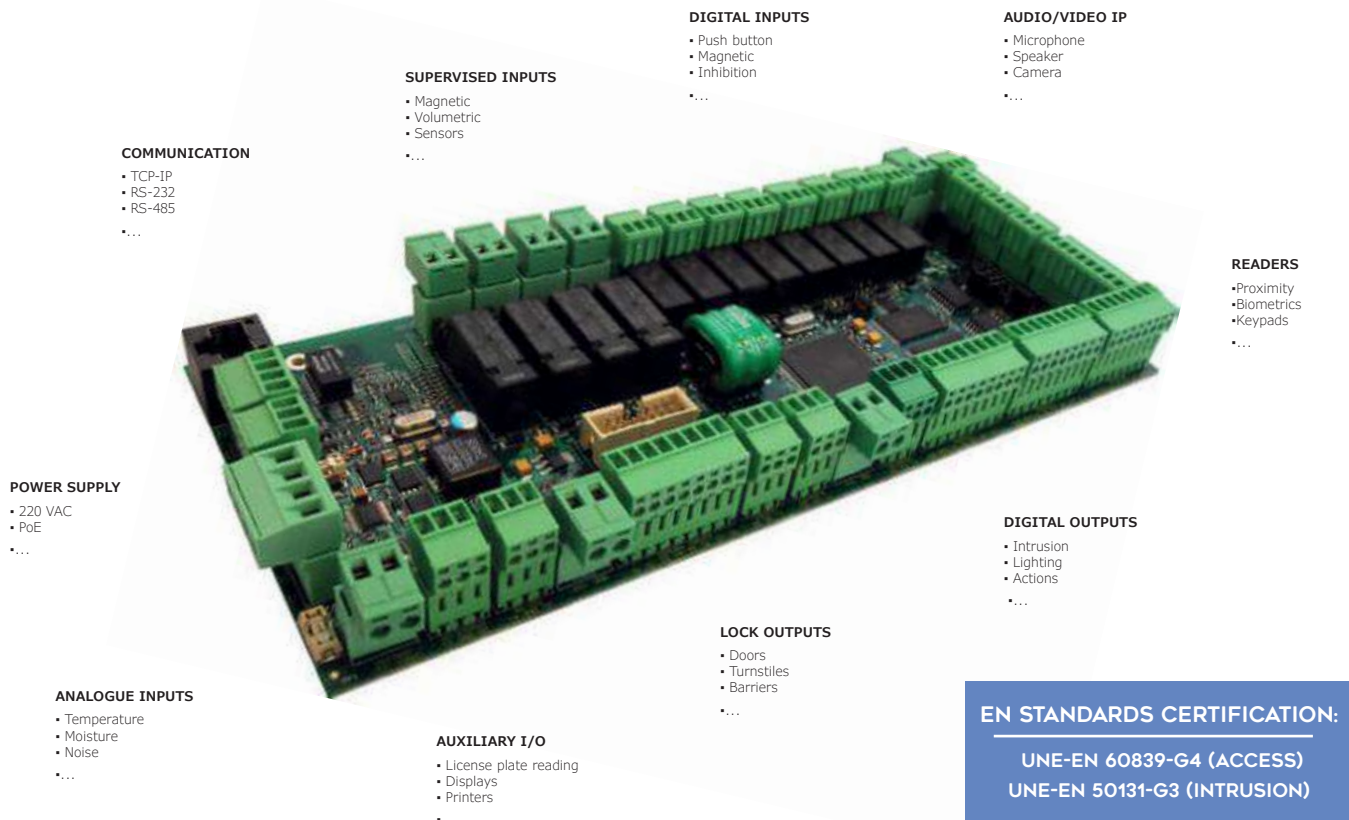
Information transmitted between the controllers and the server through the IP network is encrypted using the Advance Encryption Standard (AES).

## INPUTS AND OUTPUTS

Help manage technical alarms and digital or analogical intrusion sensors, and can be extended with expansion boards.

## AUDIO AND VIDEO IP

It enables the connection of readers with integrated audio and video to add intercom or video intercom functions with SIP protocol to the access control system.



	ASD/1	ASD/2	ASD/4	AHS
<b>ACCESS CONTROL</b>				
<b>Readers and doors</b>				
No. of readers	1	2	4	1
No. of doors	1	2	4	1
Supports dropbox reader	0	1	2	0
<b>Audio - video support</b>				
Audio channels (with AVDS - VoIP extension)	1	2	2	-
Audio and video channels (with AVDS - IoIP extension)	1	2	2	-
<b>Capacities</b>				
No. of employee cards	100,000	100,000	100,000	100,000
No. of visit cards	2,500	2,500	2,500	2,500
No. of access messages	10,000	10,000	10,000	10,000
No. of alarm messages	1,000	1,000	1,000	1,000
<b>Inputs/Outputs</b>				
Door relay	1	2	4	2
Output relay	1	2	4	2
Door status	1	2	4	2
Disable reader	1	2	4	2
<b>INTRUSION</b>				
<b>Inputs/Outputs</b>				
Supervised inputs	4	8	8	0
Relay outputs	1	2	8	0
Open collector outputs	2	6	0	1
<b>Tampers</b>				
Cover opening		Yes		-
Box withdrawal		ASD/x-G version only		-
<b>Communications</b>				
Encryption		AES		-
<b>CORE</b>				
<b>Power</b>				
Power supply input		220 VAC or PoE		
UPS battery		Optional (Included in ASD/x-G version)		
<b>Certifications</b>				
EN-50131 INTRUSION		ASD/x-G version only		-
EN-60839 ACCESS		ASD/x-G version only		-



# ASD/2 - RACK CONTROLLER

The ASD/2 controller can be supplied in RACK format.

In this format, both the ASD/2 board and its power supply are presented on a single board with LED operation indicators on the front and a pluggable rear with all the power and signal terminals.



*In this format, capacities/features are the same as in the box/cabinet finish.*

Prepared for an 84 HPs (19") rack, it takes a height of 6 Us (double expanded europlug). Each rack can install **up to 7** ASD/2-RACK controllers.

## INPUTS AND OUTPUTS

“

*The DORLET ASD/x controllers allow you to expand your inputs and outputs with input/output expansion boards.*

”

These boards are connected to the ASD/x controllers through I2C communications and they are powered from the ASD/x board itself.

Boards are supplied in a separate box from the controller, or embedded in its box, depending on the client's needs.

### SUPERVISED INPUTS

Idle, alarm, short-circuit and open circuit status detection.

### DIGITAL OUTPUTS

Relay outputs with de-energised NC and NO contacts.



## AVDS

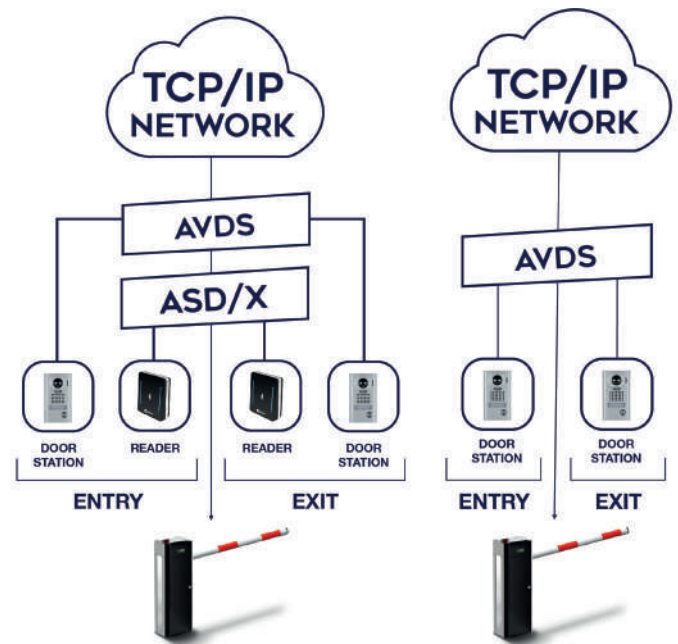
# AUDIO AND VIDEO

DORLET®'s AVDS system consists of a high-end board that enables to expand the roles of the ASD/X controllers, adding the possibility to perform licence plate recognition or audio-video transmission (intercom functions).

**This AVDS incorporates high performance video processing with graphic accelerator.**

It can be operated by connecting it to the controller and managing its communications (NAT mode) to save a TCP-IP connection or in a standalone mode.

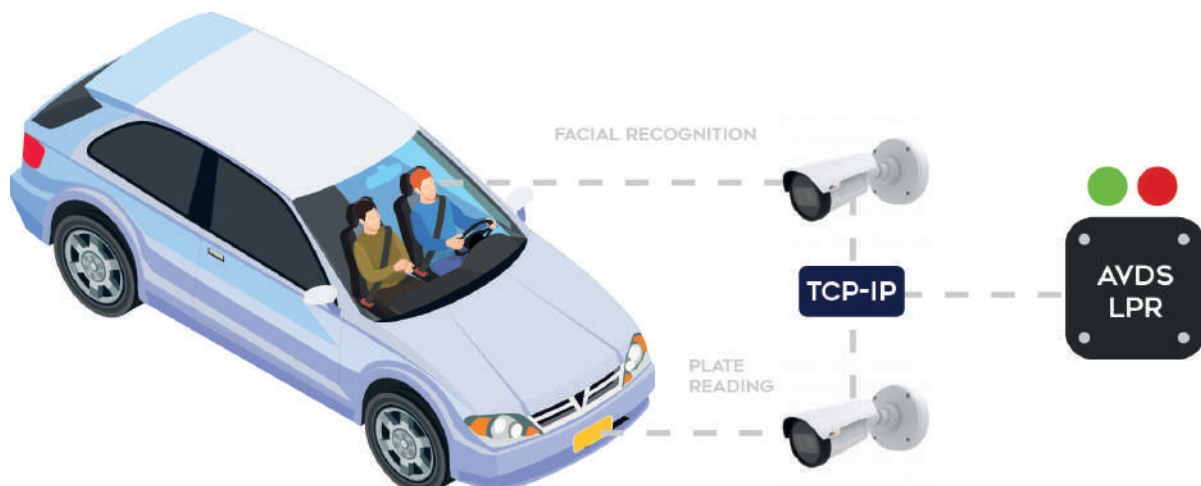
- ✓ 2 full audio and video intercoms.
- ✓ Possibility of connecting intercoms and/or cameras separately.
- ✓ Possibility of integrating with PBX SIP (registration / non-registration).
- ✓ Monitoring and remote control.
- ✓ Online or USB firmware update.
- ✓ Scalable solution.



# LICENCE PLATE READING

The AVDS-LPR system enables the recognition of licence plates through the same controller. It has an OCR system embedded in the board itself, which carries out the recognition of licence plates via third-party IP video cameras (see compatible models).

Each AVDS-LPR board can manage up to 2 video cameras **allowing both front and rear licence plate and facial readings among others**, thus being able to set different security levels for access.







READERS

## Access Control Readers

---

DORLET® readers follow the same philosophy of product, performance and modularity. This is how we capture and satisfy the client's needs regarding:

### Reading technology

- **Card technologies:** proximity (Mifare, Desfire), EV1, EV2...
- **Virtual credentials (smartphone):** NFC, BLE
- **Biometric technologies:** fingerprint, face recognition...
- **Other technologies:** long distance, license plate reading, radio, QR codes...
- Accessories such as keypads, displays, microphones, speakers, cameras...

### Functionalities

- Pedestrian access control with different security levels.
- Vehicle, trailer, etc., access control with ability to identify the driver at the same time.
- Employee clocking records, with reader inquiries, incidence marking...
- Patrol control, visit record, dining room control...





# Desfire/Mifare® R/W card technology for DORLET® systems

DORLET®'s ID card readers use mainly 13.56 Mhz reading/writing DESFIRE® or MIFARE® technology with **optional card number encrypting for maximum security** (Grade 4 Access).

**DORLET® identifies the user through an encrypted and password-protected (CSN DORLET) area of the card memory, owned by the client. This guarantees the card's full security.**

It enables the use of the card as the common system to access multiple applications that require **advanced features** of identification, security, reading and recording of personal data.



*Standard technologies regulated by ISO standards are used.*

*Thus, vending, security or computer equipment vendors who use this technology as a means of identification can use a part of the card memory and leave the rest clear.*

DORLET® uses Mifare® technology, namely, Mifare® Classic and/or Mifare® Desfire® EV1-EV2. Both technologies enable for the **reading and writing of roles on the card memory, always protected by a password key** to ensure a secure access control.

Although the advantages of Mifare® technology, Desfire® EV1 or EV2, are superseding Mifare®Classic technology.

## Mifare®Classic system features

- Price
- Easy to integrate
- Market presence (manufacturers and devices)

## Additional advantages of the Desfire®EV1-EV2 system

- Safer
- Higher capacity
- More versatile and configurable

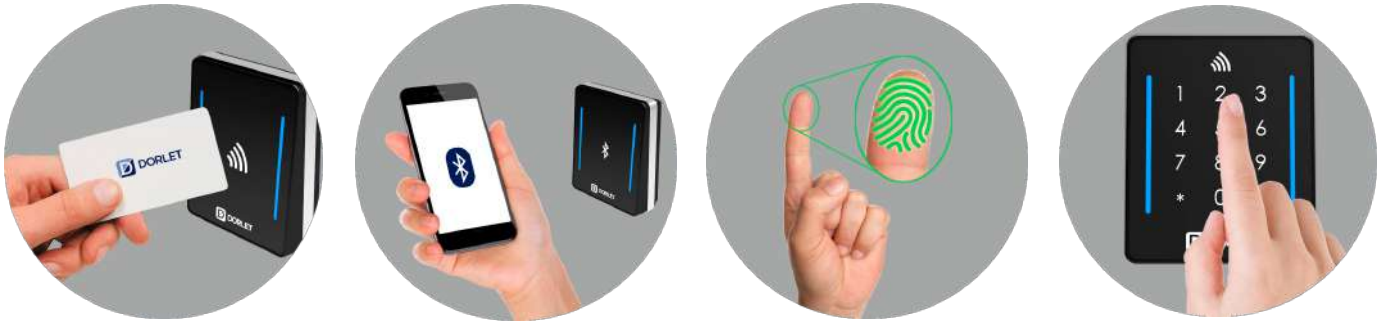
	Mifare Classic	Mifare Desfire EV1	Mifare Desfire EV2
Report	Up to 4Kb	Up to 8Kb	Up to 32Kb
Organisation	16 sectors of 64 bytes	File system	File system
UID	4 bytes (NUID) 7 bytes (UID)	7 bytes (UID)	7 bytes (UID)
Baudrate	106 kbits/second	From 106 to 848 kbits/second	From 106 to 848 kbits/second
Access keys	2 keys per sector	Up to 14 keys per application	Up to 16 keys per application
Security	Crypto1	DES, BDES, AES 128	DES, BDES, AES 128

# EVOPass® readers

DORLET® presents a wide range of modular readers that, in their different variants, provide all the identification technologies and roles required for access control.

They can be installed both indoors and outdoors, and like the rest of the DORLET® systems, they have **encrypted communications with the controller** with **Grade 4 access certificates**.

This reader enables both the reading of the CSN (Chip Serial Number) on the card and the reading-writing of data in the card's memory.



**DORLET® identifies the user using an encrypted, password-protected (CSN DORLET) area of the card memory.**

## EVOPass® 20

Multi-technology reader that can be incorporated as an identification tool:

- Mifare / Desfire EV1-EV2
- Keyboard
- NFC
- BLE (Bluetooth Low Energy)

It can include a 12-key keypad that supports several identification factors (cards, pin...).



Dimensions	81 x 101 x 31 mm
Reading range	Up to 5 cm
Virtual credential	Bluetooth Low Energy (BLE) and NFC
Keyboard	Optional
Power	12V DC
Maximum consumption	200 mA.
Protection	IP65

## EVOPass® 40

Multi-technology reader that extends the features of the EVOPass® 20 reader through a biometric fingerprint sensor.

The reader can store up to 2 fingerprints per user and can be supplied (1:n working mode) with a capacity for 3,000 or 5,000 users.

Unlimited users in 1:1 working mode (fingerprint on card), and various identification factors available (cards, pin, fingerprint...)



Dimensions	148 x 84.82 x 53.62 mm
Reading range	Up to 5 cm
Virtual credential	Bluetooth Low Energy (BLE) v5.0 and NFC
Keyboard	Optional
Power	12V DC
Maximum consumption	300 mA
Protection	IP65

## EVOPass® 80

Multi-technology reader that extends the features of the EVOPass® reader 40 by incorporating microphone, speaker and camera for video intercom functions integrated with SIP protocol and in the access control.

With a 7" colour touch screen, advanced features can be added for time control and/or arming-disarming.

SIP Intercom (without video)

SIP intercom with video and RTSP video.

Reader with **embedded TCP-IP communications** for high quality audio-video streaming via SIP protocol.

Dimensions	138 x 172 x 58 mm
Reading range	Up to 3 cm
Virtual credential	Bluetooth Low Energy (BLE) and NFC
Keyboard	Included in touch screen
Power	12V DC
Maximum consumption	500 mA.
Protection	IP65



VISITAS  
BISITAK  
VISITS





# OTHER READERS

DORLET® also operates with other types of identification technologies for the control of vehicles, visitors, parcels...

## Long distance Active

Solution for long-range identification of vehicles (2.45 Ghz).

Ideal for vehicle access control in car parks.



Dimensions	330 x 274 x 140 mm
Reading mode	Proximity
Reading range	Up to 10 m
Power	220 VAC
Protection	IP65

## Long distance Passive

Solution for long-range identification of vehicles (UHF).

Ideal for vehicle access control in car parks.



Dimensions	286 x 285 x 78 mm
Reading mode	Proximity
Reading range	Up to 10 m
Power	12-24 VDC
Protection	IP66

## QR codes / Barcodes

Solution for the identification of QR codes or barcodes.

Ideal for visitor access control.



Dimensions	74 x 50 x 26 mm
Scan pattern	Image area (844 x 640 px)
Scan angle	42.4° horizontal / 33° vertical
Focal point	127 mm
Light level	0 to 100 lux

## Facial Recognition

Solution for facial recognition identification.

Ideal for higher-security access control.



Dimensions	141 x 164 x 125
LCD Type	4" TFT colour
Communications	TCP-IP
Users	Up to 30,000
Image recording	Up to 50,000



## WIRELESS SYSTEMS

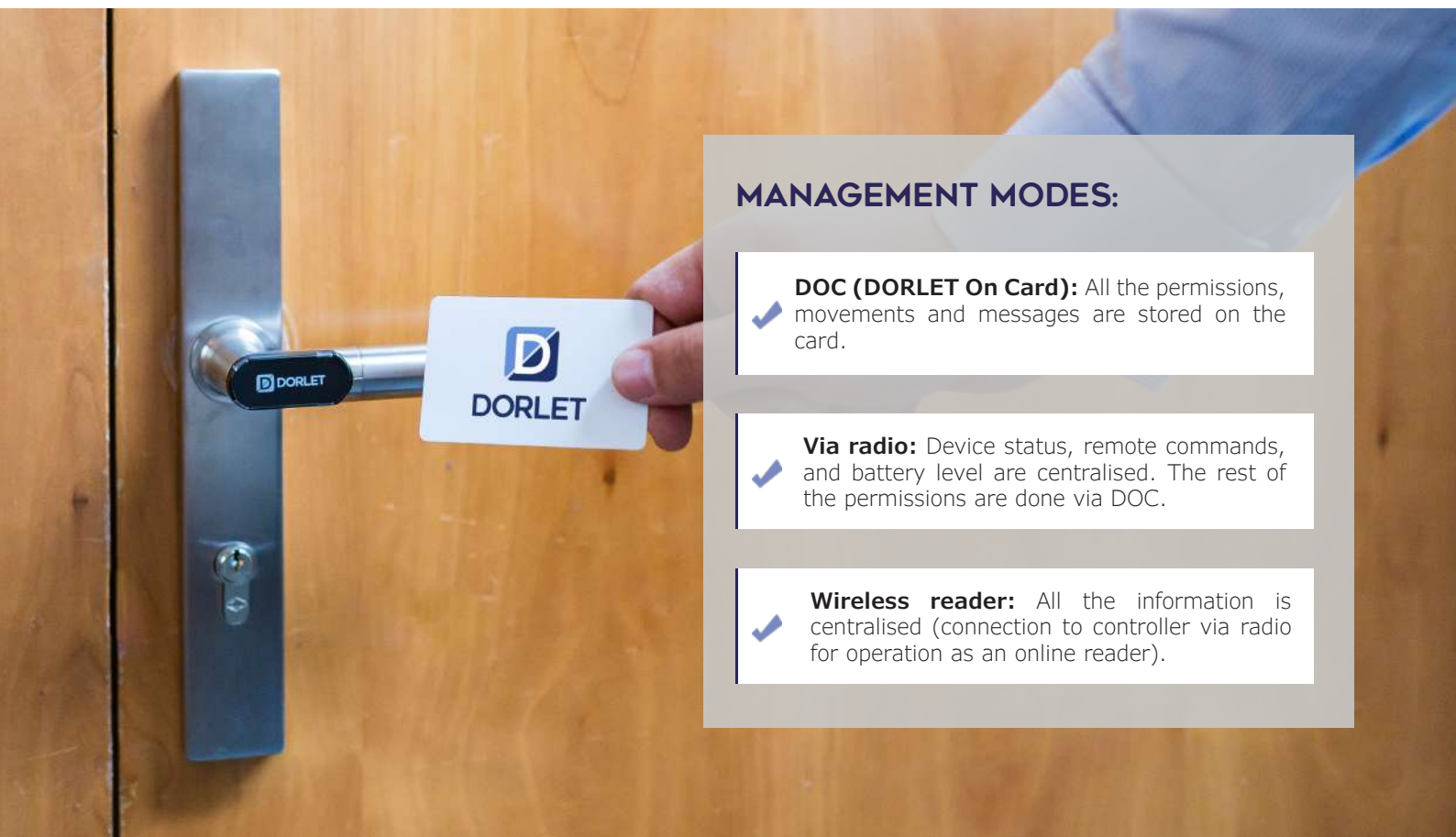
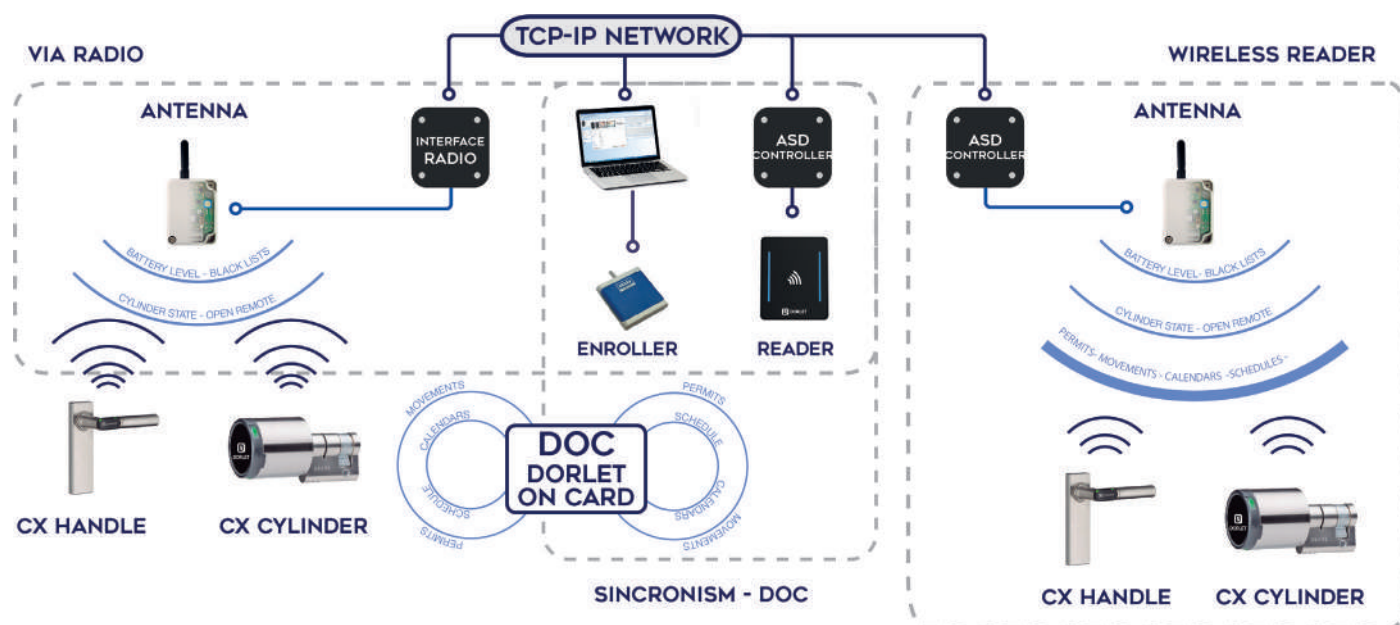
## Wireless systems

Access control subsystems for rooms, offices, classrooms... It enables complete control with entry and/or exit reader.

It can be managed from the DASSnet® software along with the **centralised systems enhancing transparency** for the user.

Different formats depending on the door type for both indoor and outdoor use (IP66).

**Supports all types of door materials (wood, glass, RF).**



### MANAGEMENT MODES:

- ✓ **DOC (DORLET On Card):** All the permissions, movements and messages are stored on the card.
- ✓ **Via radio:** Device status, remote commands, and battery level are centralised. The rest of the permissions are done via DOC.
- ✓ **Wireless reader:** All the information is centralised (connection to controller via radio for operation as an online reader).



# CX HANDLES

Electronic handle with DORLET ON CARD (DOC) operation or via radio with management integrated in DASSnet® software.

In DOC operation, monitoring of the status and level of the batteries is recorded on the user cards for transmission to the PC.

## Management modes:

- DOC (Dorlet On Card)
- Via Radio
- Wireless reader

Reading mode	MIFARE® or MIFARE DESFIRE® proximity
Reading frequency	13.56 MHz
Power	CR123A battery
Battery life	Up to 30,000 cycles or 1 year
Protection	IP65 or IP66



CX6174 - Round



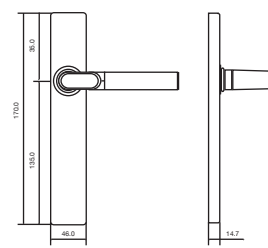
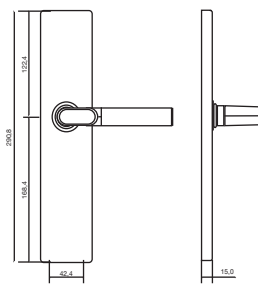
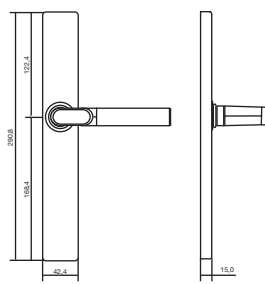
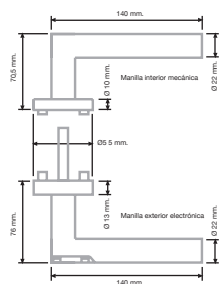
CX6174 - Narrow



CX6174 - Wide



CX6172 - Short



The different finishes available (escutcheons) facilitate **installation on all types of doors** (wood, glass, RF, panelled doors...).

They are **compatible with all types of mechanical locks** and can be supplied with a keyhole to include a traditional key cylinder.

## OPERATING MODES:

✓ Closing (opening by card)

✓ Free passage (automatic opening by calendar and time)

✓ Toggle (opening and closing by card)

# CX CYLINDERS

Electronic cylinder with MIFARE® or MIFARE DESFIRE® proximity card operation.

The reader, the opening mechanism, the electronics and the batteries are all integrated into the small metallic doorknob.

Designed to add a **wireless access control system** quickly to a door. Its EURO profile enables it to be installed on almost any door that has a mechanical lock with a cylinder.

Its management by DOC (DORLET On Card) or via radio facilitates offline/online operation, with complete integration within the DASSnet® platform and can be combined with the rest of the DORLET® offline and online systems within the same facility.

It has **real-time** clock, facilitating the programming of calendars, schedules, automatic openings, black lists...

## Management modes:

- DOC (Dorlet On Card)
- Via Radio
- Wireless reader

## OPERATING MODES:

- ✓ Closing (opening by card)
- ✓ Free passage (automatic opening by calendar and time)
- ✓ Toggle (opening and closing by card)

Format	Euro Profile DIN18252
Cylinder length	From 30 mm to 70 mm (including 5 mm)
Doorknob dimensions	Ø 40 x 42.7 mm
Doorknob dimensions (lock)	Ø 40 x 42.7 mm (Ø 29 x 20 mm)
Reading mode	MIFARE® or MIFARE DESFIRE® Proximity
Reading frequency	13.56 MHz
Power	2 x 3V CR2 type lithium batteries
Battery life	Up to 30,000 cycles or 1 year
Protection	IP65 or IP66



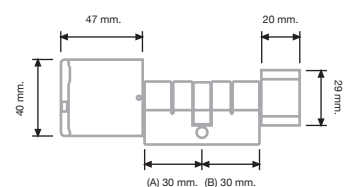
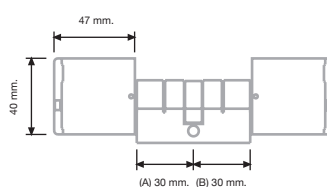
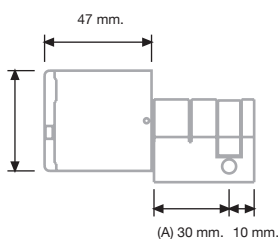
CX4000 - Single



CX4000 - Double



CX4000 - With lock





SOFTWARE



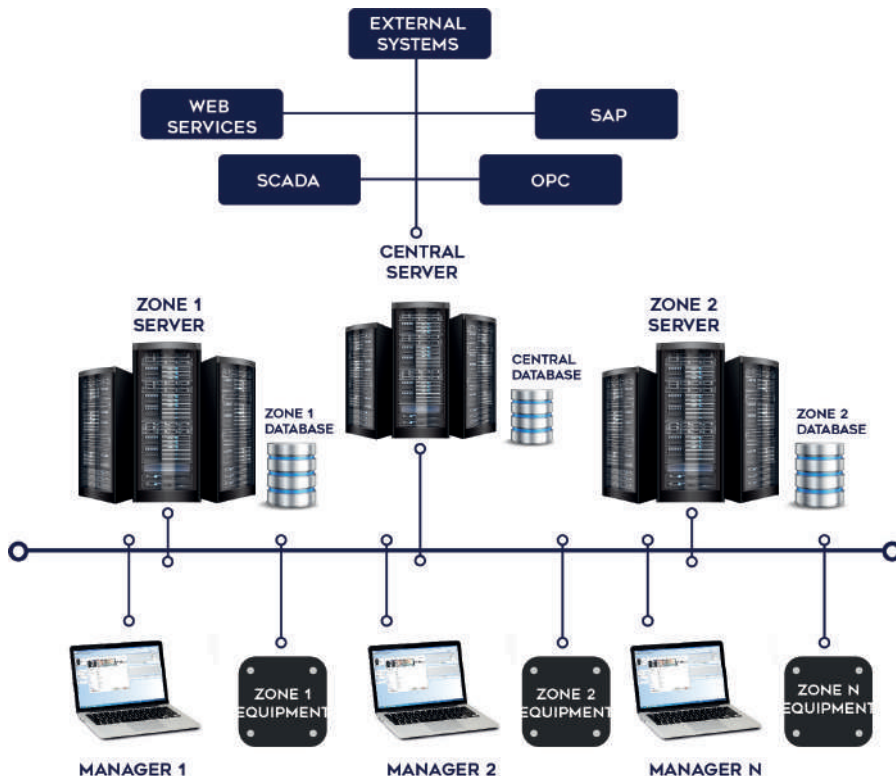
# DASSNET®

DASSnet® is a platform developed by DORLET® that provides **comprehensive management of all security systems** in an installation.

Applicable from a simple Access Control installation, it also supports integrating, in the same application, management of all types of systems such as CCTV, Intrusion, Fires, IP Intercom, etc.



It operates both in client-server mode and with WEB modules, and it is **completely modular**. Made up of different modules, these can be added and expanded according to project needs.



## Registration

DORLET® has different DASSnet® **high-availability** management architectures, which enable the creation of advanced configurations for clients who require it.

In addition to **cluster equipment** support, it is possible to segment facilities into different **area servers** to ensure their full integrity in the event of communications faults and/or tampering attempts.

Thanks to this configuration, it is possible to include **centralised-distributed data management/replication** while maintaining the independence of each area server.

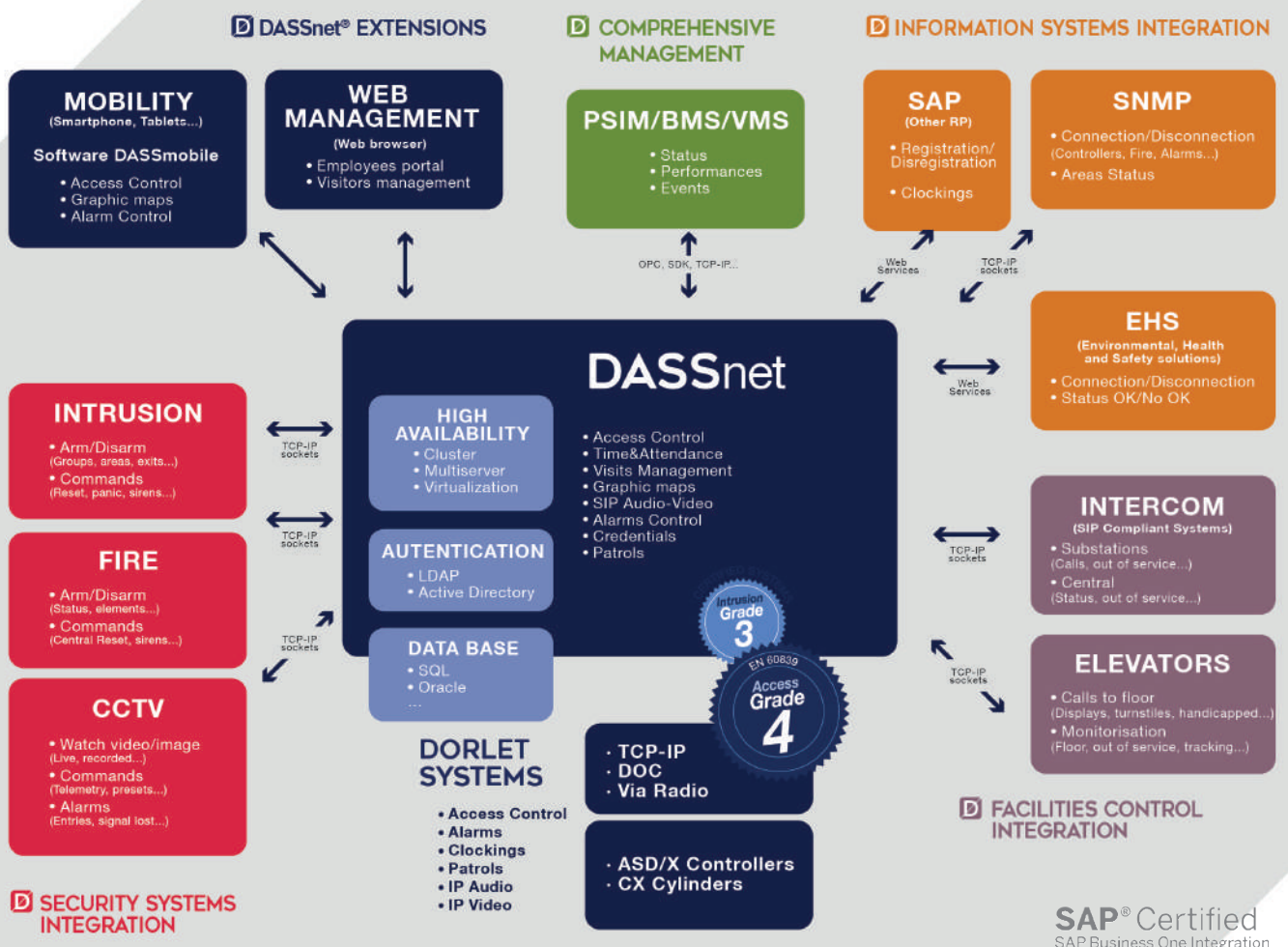
# Modular architecture with allocated, open and easily expandable intelligence. A single platform for managing all your security systems.

It can work on high-availability **architecture**. This ensures continuous system operation (Cluster Servers, automatically reconnecting managers, etc.), and provides **great robustness** in case of potential faults, whereas no other existing application on the market offers all these security mechanisms.

It enables the integration with other applications (RP's, Scada, etc.), and it has interfaces developed for this purpose, including its **SAP approval**.

DASSnet® is therefore, the perfect management software for projects of any kind, from small companies to large corporations or organisations with different locations that need integrated management on their Security Systems.

## DORLET SYSTEMS



## List of modules

---

### ACCESS CONTROL

---

Software for **managing all access control subsystems, people, credentials, etc...** It enables to control both people and vehicles by means of permissions, schedules, calendars...

Includes graphic map views for **real-time monitoring of all accesses.**

### DASSTIME®

---

Time control through website and Cloud mode.

Specially designed for **minimising management costs and controlling work schedules.**

### VISITS CONTROL

---

Visits management, enabling **access to facilities with permissions** or other parameters.

Counts with advanced features such as pre-registration via web, and self-registration at kiosks or unattended workstations.

### LOCKER CONTROL

---

Access control module expansion, enabling **integrated lock management for lockers**, which can be managed in groups, individually...

### PATROL CONTROL

---

It enables to **programme a series of patrols to be carried out by the guards** through readers and/or activation of alarm inputs.

### INTERCOM SYSTEM

---

Possibility of **managing the integrated intercoms or video intercoms** on the own or third-party readers via SIP protocol.

### ALARM CONTROL

---

It enables the **management of any aspect regarding alarm inputs and outputs** (analogue and monitored).

It also enables to programme areas, schedules and/or automatic actuations among DORLET® devices and those from third-party manufacturers.

### INTEGRATIONS

---

Possibility of integrating third-party security systems (CCTV, fire, intrusion...), security platforms (MILESTONE...) and/or building automation (OPC, lifts...).

**It is possible to display their elements on DASSnet®'s map views and set up actuations among them;** as well as other information system integrations (EHS, SAP, SDKS).

### APPS

---

Mobile applications (Android and iOS) for access and alarm management (DASSnet®), as well as advanced virtual reader roles, credentials...

*Full control of roles, access to devices and people, through an advanced system of users and permissions for DASSnet® operators and administrators with optional integration in platforms such as Active Directory, LDAP...*

# ACCESS CONTROL

DASSnet® is a powerful tool for managing access control and it is very easy to use.

The application can be managed by several users with different levels of privileges through profiles of visits (accesses), and control an unlimited number of visitors and/or vehicles with access authorisations and elements of field (controllers, readers, etc...) without extensions.



## DIFFERENT ACCESS PROFILES

### ✓ Access monitor

Real-time information on all events: access control subsystems.

Possibility of programming filters by event type or discriminate by systems.

### ✓ Operative areas

For large facilities. It allows for the setting of user permissions so that they can only view and act (give registration cards, create schedules...) on the systems assigned to their management permissions.

## BACKUP SECURITY COPIES MANAGEMENT

## GRAPHIC MANAGEMENT OF ELEMENTS

## LOG-LIST MANAGEMENT

### ✓ Vehicle control

Carpark management: It enables to identify users and/or vehicles and control parking capacity, thus limiting the use by departments, companies, etc... in addition to managing fleets.

### ✓ Badges

Card templates designs to be printed later with the users' data through the corresponding printers connected to DASSnet®.



# DASSTIME®\*

*'This app is a tool to control employees but it also seeks to achieve an optimal labour market for all parties'.*

DASStime® time management software is a 100% web-based computer tool in CLOUD mode, designed to simplify the management and control of working schedules.



**100% WEB**



**REAL-TIME  
CHANGES**



**INTEGRATION  
WITH DASSNET  
POSSIBLE**



**CONTROL  
OF ABSENTEEISM**

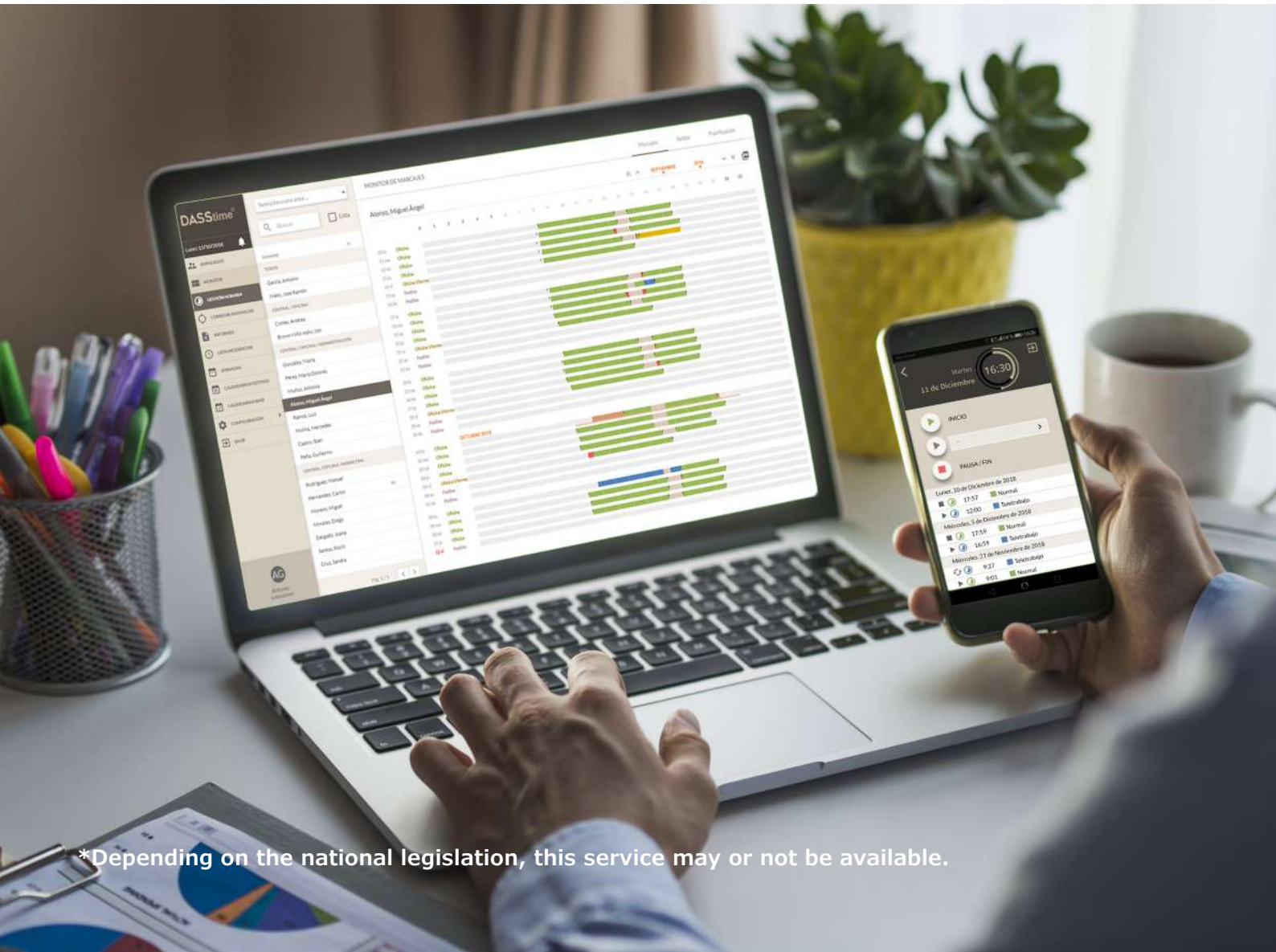


**USER-FRIENDLY  
INTERFACE**



**DETAILED  
SCHEDULES**

DASStime® is specially designed to minimise Human Resources management costs, reduce necessary infrastructures and optimise time and work processes.



\*Depending on the national legislation, this service may or not be available.

# VISITORS CONTROL

The software allows you to **manage the visits of an organisation in a simple way**, registering them in advance or at the time they take place, **assigning access permissions** according to the profile of visitor or person to visit, capturing your data through OCR devices and subsequently **analysing data** using lists and statistics.

## HIGHLIGHTED FEATURES



DATA COLLECTION  
FROM OCR



PRE-REGISTRATION  
VIA WEB



SELF-REGISTRATION

***Integrated management in the DASSnet® Access Control software.***



### ✓ OCR and card recognition

- The OCR capture enables data to be obtained from different official documents (ID card, passport, residence permit, driving license...); it accepts documents from different countries.
- The document's authenticity is detected in the IDFRAUD version.
- It facilitates the collection of both personal data and the document photo and signature.
- The card recognition software automatically fills in the field of the card associated with the visit, avoiding the need to write the card number in that field.

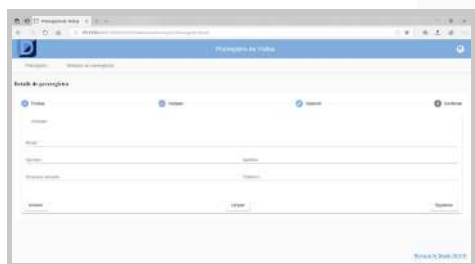
# PRE-REGISTRATION VIA WEB

The Pre-Registration via web application for visitors is a tool for the **generation of pre-appointment requests** that an organisation, equipped with the DASSnet® system, can receive in the future.

In this application, users can register a previous appointment to be managed later (rejected, cancelled, accepted, etc.)

The authorised visitor receives a **QR code** by **e-mail** to access the facility using a **mobile device**.

If the visitor does not have a mobile phone, the code can be printed through the autocheck kiosk at the installation.



**Fully web-based management environment.**

# SELF-REGISTRATION KIOSK

Supplementary to the visit control QR system, there is a range of kiosks that **expedite the process of visitor registration to the facilities**.

**All the necessary complements are integrated in a single housing** for managing visits and automatising operation through a digital wizard.

Application designed with specific menus to speed up self-registration of people with no knowledge on the platform, **the possibility to customise** with corporate image, signature collection, multi-language...

## ✓ Accessories that can be included:

- OCR document reader (ID, passport, driving licence).
- Credential printer with personal data, barcode or QR code.
- Webcam.
- Barcode or QR code reader.
- Other readers and/or accessories.



# INTERCOM SYSTEM

The DASSnet® platform is completed with an intercom system, which can either be propriety or from a third-party (integrated via SIP protocol).

**Facilitates access through controlled areas** to both unauthorised persons (card) and to authorised persons who may have forgotten their card, etc.

The integration is carried out through the SIP protocol, making it possible to call from a reader and/or intercom to a control station equipped with a SIP phone or extension of the client's own switchboard, as well as other mobile or wireless devices that can be managed.

## HIGHLIGHTED

### FEATURES

#### SIMULTANEOUS MANAGEMENT

from DASSnet® software and a PBX switchboard.

#### VOIP TECHNOLOGY

that facilitates interaction with third-party SIP providers.

#### VIDEO STREAMING

simultaneous management from several intercoms/video intercoms and operator stations.

***Greater flexibility and performance compared to traditional access control systems.***

# DORSIP SWITCHBOARD



- ✓ Comprehensive solution
- ✓ Easier communication
- ✓ Stand-alone access point





# ALARMS AND MAP VIEWS

The main objective of this module is the **integration of all controllable elements** (collectors, doors, sensors, buttons, cameras, etc.) **in a graphical environment** where the ease of use is its most important feature.

In this way, and through a simple click of the mouse, **any authorised user may act on the elements defined above.**

All the intrusion and perimeter security signals are controlled by the supervised inputs of the controllers, facilitating a straightforward integration of all the signals and the automatic and manual actuations on any integrated system.



## ✓ Alarm monitor

- Online view of alarm status.
- Alarms defined by name, device...
- Alarms classified by priority.

## ✓ Alarm map view

- Automatic display on the map.
- Manual alarm activation from icon on map.
- Rearm alarms from the map.

## ✓ Alarm Zones

- Group alarm inputs.
- Can be set to logic OR or AND.
- Direct link to an exit.

## ✓ Manual actuations

- The system shows indications on screen for the operator or how to proceed when an alarm is activated.

## ✓ Alarm Programming

- Easy creation of alarm programmes.
- Full annual calendar.
- Arm/disarm devices connected to the entrance.

## ✓ Alarm log

- Reports of people present.
- Filter desired information.
- Results displayed on screen, printed or exported.



## INTEGRATIONS

# Hardware Integrations

---



## CCTV\*

This enables DASSnet® to receive real-time or recorded images, receive alarms, perform camera movements, etc. This functionality can interact with other integrated security systems.



## Fire panels\*

This feature enables DASSnet® to receive alarms from fire sensors and emergency push buttons, to silence alarms... This functionality can interact with other integrated security systems.



## Intrusion\*

DASSnet® can receive any kind of intrusion alarm, act on its exits, arm and disarm areas... This functionality can interact with other integrated security systems.



## Key cabinets\*

It enables to manage access permissions to the cabinet and/or to each key via the cabinet's reader itself, which is controlled by DASSnet® software.

\*Please, inquire available roles for each integration model.



# CCTV

It enables the connection to video servers, digital recorders, IP cameras, etc., to obtain images both in real time and from recorded video, as well as other roles related to alarms and/or signals of the CCTV system itself.

- ✓ Position camera-monitor.
- ✓ Send presets.
- ✓ Receive lists of cameras and alarm inputs.
- ✓ Activate alarm outputs.
- ✓ Receive signal loss.
- ✓ Manage other alarms and move cameras.
- ✓ Receive live and recorded images.



# FIRE PANELS

It enables to review and display on DASSnet® the status of each element of the fire detection system, to activate, in case of fire, evacuations, alarms, camera presets, etc. through automatic actuations.

- ✓ Show element status.
- ✓ Reset fire panel.
- ✓ Enable/Void elements.
- ✓ Mute sirens.
- ✓ Poll element status.

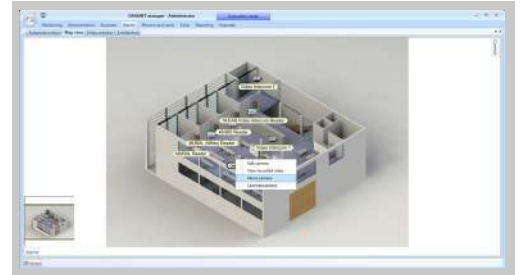




# INTRUSION

It extends the alarm signal management capability of DORLET® systems to the intrusion panels connected through this software module.

- ✓ Show element status.
- ✓ Reset panel.
- ✓ Arm/Disarm groups.
- ✓ Arm/Disarm areas.
- ✓ Activate/Deactivate outputs.
- ✓ Mute sirens.
- ✓ Send silent panic signal.



**ADEMCO**  
A Honeywell Company

**DSC**  
De Tyco Security Products

**interlogix**  
Solid Technologies

**General Electric**

**P A R D O X**  
SECURITY SYSTEMS

**RISCO**

# KEY CABINETS

TRAKA key cabinets are integrated into the DASSnet® control platform. Integration is developed based on their SDK and communication between both systems is online.

It allows management, from the software, of access rights to key cabinets and to each key using the reader (card/biometric).

- ✓ Display of cabinets with their corresponding keys.
- ✓ Create groups and/or regions.
- ✓ Assign keys or groups to employees.
- ✓ Query on who has a particular key at any given time.
- ✓ View the latest movements related to keys.
- ✓ All events collected from the cabinet are displayed on the access monitor.
- ✓ Events search within their corresponding lists.



# Building Automation Integration

This type of building stands out because of the constant flow of employees and visitors, the presence of one or more companies inside the building, and the need to control a large number of spaces with different uses.

**The integration of other security solutions and facilities is essential for efficient building management.**

Likewise, access control must allow both control of the technical areas of the building, and managing common and particular areas of each tenant (multi-company).

## LIFTS

### ✓ Features

- Directions for employees or visits to most commonly visited areas.
- Communication of special conditions (VIP, handicap accessible...)
- Display of messages on access doors.
- Access control to all areas right from the reception desk.

### ✓ More efficient management

- Redirection of people flow towards lift area.
- Energy saving.
- Reduction of breakdowns.

### ✓ Monitoring

- Technical alarms for lifts.
- Floor at which lift is located.



## SERVER/CLIENT OPC

The OPC communication standard (OLE for Process Control) enables DASSnet® to interact with any building automation communication protocol.

**OPC communication is carried through client-server architecture.** The OPC server is the data source (as a floor-level hardware device) and any OPC-based application can access the server to read/write any variable provided by the server.

It is an **open and flexible solution** to the classic problem of propriety drivers. Virtually all major manufacturers of control, instrumentation and process systems have included OPC in their products.

The main objective of offering this API is to provide an **interface independent of the development environment** to use the services offered through OPC.

## Integrations with other platforms

**DASSnet® is designed to be easily integrated with third-party systems in order to offer a complete solution adapted to client's needs.**



### SDK

It supports two-way integration of applications from other vendors with DASSnet® software, as well as interaction with the devices in the installation.



### SAP

The company's HR solution can be integrated into DASSnet®.

The solution sends clocking records and incidents from DORLET® terminals to the HR software, for scheduling and attendance control.



### EHS

DASSnet® has several integrations with cloud-based Environmental, Health and Safety Solutions (EHS) software.

This integration facilitates the access control of external workers within the organisation, ensuring their access according to documentation status.

# SDK

DORLET Integration Services is a service interface that enables applications from other vendors to integrate with the DASSnet® software.

The proposed integration is intended to synchronise the information in DASSnet® with other platforms (**PSIMs, VMS, BMS...**) within the same application (**MILESTONE, AGORA, APPVISION...**).



**ACCESSES**



**VISITS**



**DEVICES**

**Accesses:** This licence enables the exchange of information regarding the installation users, both for uploading personal data and for exporting the movements generated by them.

**Visits:** This licence enables managing visit rates from third-party applications to either simply uploading personal data for later validation, or authorising full access to the visitor.

**Devices:** This licence enables receiving actions on all devices present in the facilities (both owned and integrated), as well as submitting the events generated in those devices.

DORLET® has different communication means available to facilitate integration with any platform:

## Webservices

- ✓ Basic HTTP authentication (configurable).
- ✓ Credential data encoded in Base64.
- ✓ Simple implementation.

## Rest

- ✓ Real-time reception of changes made.
- ✓ Interface independent of the development environment.
- ✓ Basic HTTP authentication to restrict access to resources.

## Net and http

- ✓ Real-time reception of changes made.
- ✓ Interface independent of the development environment.
- ✓ Basic HTTP authentication to restrict access to resources.



# SAP

A **two-way information exchange** with SAP is enabled thanks to certified integration, which enables to receive both employee (and their personal data) registration and leaves and terminations, and exporting employee movements (time events), which may be used by SAP HR services.

DORLET® has **certified integration with SAP** implemented in many different facilities.



# EHS

DASSnet® has several integrations with cloud-based Environmental, Health and Safety Solutions (EHS) software. This integration enables **external workers access control within the organisation**, which makes it possible to allow/deny access depending on the status of the permissions within the EHS.

***We guarantee that any external contractor or person lacking the required information/paperwork will not be able to access the facilities.***

- ✓ DASSnet® launches employee queries on the platform (integrated with a frequency configurable in the service itself).
- ✓ It enables queries on employee changes and leaves and terminations, respectively. Both methods have date filtering.

## APPS

# DASSMOBILE

DASSmobile is an app for mobile devices that integrates into the DORLET® software environment. It allows the user to perform basic **monitoring and management tasks on the installed devices** for access control.

- ✓ Display of available devices and their status.
- ✓ Execute actions on the facilities' devices.
- ✓ Receive real-time alarm notifications.
- ✓ Monitoring of access messages generated from access control systems.
- ✓ Video in real time from the cameras.
- ✓ Display and management of active alarms.
- ✓ Perform device searches.
- ✓ Display of blueprints.



# VIRTUAL READER

DASSapp Virtual Reader enables to **check the information associated with a credential** from a mobile device while using secure communications with digital certificates.



***The application is ready to connect to the DASSnet® server via HTTP or HTTPS. For auditing and security reasons, DORLET recommends to use HTTPS by installing a digital certificate on the DASSnet® server.***

## Accessories

---

# ENROLLERS

DORLET® provides card (MIFARE/DESFIRE) and fingerprint enrollers for credential management. They are especially useful when speeding up card and fingerprint registration in the DASSnet® software.

Card enrollers read the CSN (Chip Serial Number) and perform data reading/writing operations in the card memory. Data access via cryptographic key ensures a more secure information transaction.



Proximity Card



Fingerprint

# OCR SCANNER

High-resolution digital scanner for personal data acquisition.

It performs both optical character recognition (OCR) and image (photo) and signature acquisition.

Valid for ID, driving licence, national passport and residence card, as well as for most international passports.



# PRINTERS

DORLET® provides several models of printers, which, together with the credential software, enable the personalisation and printing of different card models with personal data (picture, name, surname...).

Depending on the printer model, it is possible to print on one or two sides. In advanced models, it is possible to print with margins or even add security elements, such as holograms.



# POST

To complete reader and intercom installation, DORLET offers different metal (stainless steel) and fibre rods and posts.

Available for both pedestrians and vehicles in two versions: car and/or car-truck (double height). All poles can be supplied with front panels and adapters to install DORLET readers. In some models it is possible to install the controller inside.



## Training sessions.

We offer training sessions for installers of any of our products.

The sessions are designed to provide the necessary knowledge to install our DORLET products as quickly and efficiently as possible.

- Easy and safe installation
- Faster installation
- Materials included
- Free courses

For more information, make an appointment via e-mail at [online@dorlet.com](mailto:online@dorlet.com)



## Professional technical support

Contact us, and we will get back to you as soon as possible.

### Software:

**Telephone:** +34 945 29 87 90 (047)

**E-mail:** [informatica@dorlet.com](mailto:informatica@dorlet.com).

### Hardware:

**Telephone:** +34 945 29 87 90 (012)

**E-mail:** [sat@dorlet.com](mailto:sat@dorlet.com).



## Newsletter subscription

We send 4 newsletters a year announcing new product launches and projects. In addition, at the end of the year we will send you the new catalogue together with a price list by e-mail.

**Sign up online:** [dorlet.com](http://dorlet.com)



**Quote quick and comprehensive**



**Easy to install**



**Easy to use**





## **DORLET S.A.U.**

Alava Technology Park  
C/ Albert Einstein, 34  
01510 Vitoria-Gasteiz · ÁLAVA · SPAIN  
Tel. +34 945 29 87 90  
Fax: +34 945 29 81 33  
dorlet@dorlet.com

## **MADRID**

C/Aguacate, 41  
28054 MADRID · SPAIN  
Tel. +34 91 354 07 47  
madrid@dorlet.com

## **BARCELONA**

C/ Sant Elies, 11-19, DPC 111  
08006 BARCELONA · SPAIN  
Tel. +34 93 201 10 88  
Fax. +34 93 201 13 76  
barcelona@dorlet.com

## **SEVILLE**

Tel. +34 699 30 29 57  
sevilla@dorlet.com

## **DORLET FRANCE**

Parc Gutenberg  
2 Bis Voie La Cardon  
91120 PALAISEAU · FRANCE  
Tel. +33 164 86 40 80  
dorlet@dorlet-france.com

## **DORLET MIDDLE EAST**

Jumeirah Lake towers  
Cluster F, HDS Tower, Office 404  
Po. Box 116899 DUBAI · UAE  
Tel: +971 4 4541346  
Fax: +971 4 4541347  
info-mena@dorlet.com

## **DORLET MEXICO**

Av. Darwin 74, Int. 301 Col. Anzures  
CP 11590 - Mexico DF - MEXICO  
Tel. +52 (1) 55 5460 6077  
mmunoz@dorlet.com